



**CLARKSVILLE URBANIZED AREA
METROPOLITAN PLANNING ORGANIZATION**

Stan Williams
MPO Director
stanwilliams@cityofclarksville.com

329 MAIN STREET
CLARKSVILLE, TN 37040
PHONE: (931)645-7448

Jill Hall
Transportation Planner
jhall@cityofclarksville.com

May 17, 2012

2010 Census Data for the Clarksville Urbanized Area:

Population: 158,955

Area Land Square Mile: 109.57

Population Density: 1448 person per square mile (ppsm)

Criteria for the 2010 Census per the Federal Register Vol. 76 No. 164 August 24, 2011:

1. After the initial urban area core with a population density of 1,000ppsm or more is identified, additional census tracts with a land area less than three square miles and with a population density of at least 500 ppsm will be included if contiguous to any qualifying census tracts. If a qualifying census tract does not exist, then one or more contiguous census blocks that have a population density of at least 1,000 ppsm are identified and aggregated.
2. Density Criteria for Military Installations: Census blocks on military installations with 2,500 or more persons are automatically given a population density of 1,000 persons per square mile.

Population:

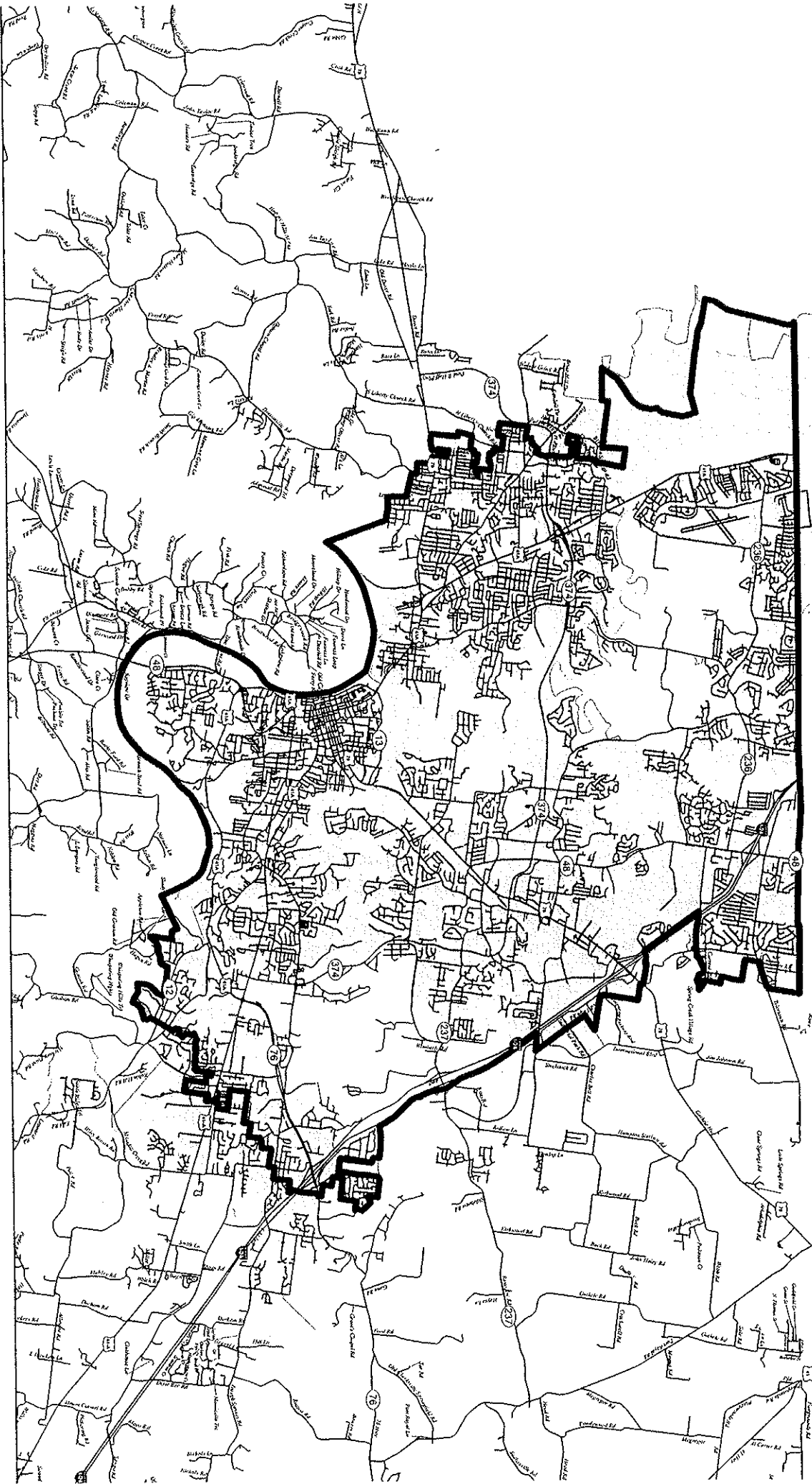
Clarksville: 132,929

Montgomery County: 172,331

Oak Grove: 7,489

Christian County: 73,955

Census Data quick facts for all four areas are attached.



Urbanized
Area in grey
pop: 2010 - 158,655
land area: 2010 - 109.57 sq mi

State & County QuickFacts

Clarksville (city), Tennessee

People QuickFacts	Clarksville Tennessee	
Population, 2011 estimate	NA	6,403,353
Population, 2010	132,929	6,346,105
Population, percent change, 2000 to 2010	28.5%	11.5%
Population, 2000	103,455	5,689,283
Persons under 5 years, percent, 2010	9.6%	6.4%
Persons under 18 years, percent, 2010	28.4%	23.6%
Persons 65 years and over, percent, 2010	7.3%	13.4%
Female persons, percent, 2010	51.3%	51.3%

White persons, percent, 2010 (a)	65.6%	77.6%
Black persons, percent, 2010 (a)	23.2%	16.7%
American Indian and Alaska Native persons, percent, 2010 (a)	0.6%	0.3%
Asian persons, percent, 2010 (a)	2.3%	1.4%
Native Hawaiian and Other Pacific Islander, percent, 2010 (a)	0.5%	0.1%
Persons reporting two or more races, percent, 2010	5.1%	1.7%
Persons of Hispanic or Latino origin, percent, 2010 (b)	9.3%	4.6%
White persons not Hispanic, percent, 2010	61.1%	75.6%

Living in same house 1 year & over, 2006-2010	72.7%	83.8%
Foreign born persons, percent, 2006-2010	5.3%	4.4%
Language other than English spoken at home, pct age 5+, 2006-2010	9.7%	6.2%
High school graduates, percent of persons age 25+, 2006-2010	91.0%	82.5%
Bachelor's degree or higher, pct of persons age 25+, 2006-2010	21.9%	22.7%
Mean travel time to work (minutes), workers age 16+, 2006-2010	23.1	23.9
Housing units, 2010	54,815	2,812,133
Homeownership rate, 2006-2010	58.8%	69.6%
Housing units in multi-unit structures, percent, 2006-2010	25.5%	18.1%
Median value of owner-occupied housing units, 2006-2010	\$124,000	\$134,100
Households, 2006-2010	46,512	2,443,475
Persons per household, 2006-2010	2.63	2.49
Per capita money income in past 12 months (2010 dollars) 2006-2010	\$21,079	\$23,722
Median household income 2006-2010	\$46,742	\$43,314
Persons below poverty level, percent, 2006-2010	15.6%	16.5%

Business QuickFacts	Clarksville Tennessee	
Total number of firms, 2007	7,055	545,348
Black-owned firms, percent, 2007	10.8%	8.4%

American Indian- and Alaska Native-owned firms, percent, 2007	0.6%	0.5%
Asian-owned firms, percent, 2007	3.7%	2.0%
Native Hawaiian and Other Pacific Islander-owned firms, percent, 2007	F	0.1%
Hispanic-owned firms, percent, 2007	S	1.6%
Women-owned firms, percent, 2007	33.4%	25.9%

Manufacturers shipments, 2007 (\$1000)	1,827,151	140,447,760
Merchant wholesaler sales, 2007 (\$1000)	320,106	80,116,528
Retail sales, 2007 (\$1000)	1,753,226	77,547,291
Retail sales per capita, 2007	\$14,661	\$12,563
Accommodation and food services sales, 2007 (\$1000)	235,478	10,626,759

Geography QuickFacts**Clarksville Tennessee**

Land area in square miles, 2010	97.60	41,234.90
Persons per square mile, 2010	1,361.9	153.9
FIPS Code	15160	47
Counties		

Population estimates for counties will be available in April, 2012 and for cities in June, 2012.

(a) Includes persons reporting only one race.

(b) Hispanics may be of any race, so also are included in applicable race categories.

D: Suppressed to avoid disclosure of confidential information

F: Fewer than 100 firms

FN: Footnote on this item for this area in place of data

NA: Not available

S: Suppressed; does not meet publication standards

X: Not applicable

Z: Value greater than zero but less than half unit of measure shown

Source U.S. Census Bureau: State and County QuickFacts. Data derived from Population Estimates, American Community Survey, Census of Population and Housing, County Business Patterns, Economic Census, Survey of Business Owners, Building Permits, Consolidated Federal Funds Report, Census of Governments
Last Revised: Tuesday, 31-Jan-2012 17:26:05 EST

State & County QuickFacts

Montgomery County, Tennessee

People QuickFacts	Montgomery	
	County	Tennessee
Population, 2011 estimate	NA	6,403,353
Population, 2010	172,331	6,346,105
Population, percent change, 2000 to 2010	27.9%	11.5%
Population, 2000	134,768	5,689,283
Persons under 5 years, percent, 2010	8.9%	6.4%
Persons under 18 years, percent, 2010	28.0%	23.6%
Persons 65 years and over, percent, 2010	8.0%	13.4%
Female persons, percent, 2010	51.0%	51.3%

White persons, percent, 2010 (a)	71.0%	77.6%
Black persons, percent, 2010 (a)	19.1%	16.7%
American Indian and Alaska Native persons, percent, 2010 (a)	0.6%	0.3%
Asian persons, percent, 2010 (a)	2.1%	1.4%
Native Hawaiian and Other Pacific Islander, percent, 2010 (a)	0.4%	0.1%
Persons reporting two or more races, percent, 2010	4.4%	1.7%
Persons of Hispanic or Latino origin, percent, 2010 (b)	8.0%	4.6%
White persons not Hispanic, percent, 2010	67.1%	75.6%

Living in same house 1 year & over, 2006-2010	76.1%	83.8%
Foreign born persons, percent, 2006-2010	4.6%	4.4%
Language other than English spoken at home, pct age 5+, 2006-2010	8.4%	6.2%
High school graduates, percent of persons age 25+, 2006-2010	90.0%	82.5%
Bachelor's degree or higher, pct of persons age 25+, 2006-2010	22.3%	22.7%
Veterans, 2006-2010	24,461	505,746
Mean travel time to work (minutes), workers age 16+, 2006-2010	24.4	23.9
Housing units, 2010	70,098	2,812,133
Homeownership rate, 2006-2010	65.1%	69.6%
Housing units in multi-unit structures, percent, 2006-2010	20.4%	18.1%
Median value of owner-occupied housing units, 2006-2010	\$129,400	\$134,100
Households, 2006-2010	60,412	2,443,475
Persons per household, 2006-2010	2.64	2.49
Per capita money income in past 12 months (2010 dollars) 2006-2010	\$22,092	\$23,722
Median household income 2006-2010	\$48,930	\$43,314
Persons below poverty level, percent, 2006-2010	14.6%	16.5%

Business QuickFacts	Montgomery	
	County	Tennessee

Private nonfarm establishments, 2009	2,547	132,901 ¹
Private nonfarm employment, 2009	37,864	2,317,986 ¹
Private nonfarm employment, percent change 2000-2009	13.0%	-3.0% ¹
Nonemployer establishments, 2009	7,687	448,516

Total number of firms, 2007	9,906	545,348
Black-owned firms, percent, 2007	8.0%	8.4%
American Indian- and Alaska Native-owned firms, percent, 2007	0.5%	0.5%
Asian-owned firms, percent, 2007	3.7%	2.0%
Native Hawaiian and Other Pacific Islander-owned firms, percent, 2007	F	0.1%
Hispanic-owned firms, percent, 2007	S	1.6%
Women-owned firms, percent, 2007	29.5%	25.9%

Manufacturers shipments, 2007 (\$1000)	D	140,447,760
Merchant wholesaler sales, 2007 (\$1000)	345,533	80,116,528
Retail sales, 2007 (\$1000)	1,877,647	77,547,291
Retail sales per capita, 2007	\$12,125	\$12,563
Accommodation and food services sales, 2007 (\$1000)	245,217	10,626,759
Building permits, 2010	1,800	16,475
Federal spending, 2009	1,036,809	65,525,306 ¹

Geography QuickFacts	Montgomery	
	County	Tennessee
Land area in square miles, 2010	539.18	41,234.90
Persons per square mile, 2010	319.6	153.9
FIPS Code	125	47
Metropolitan or Micropolitan Statistical Area	Clarksville, TN -KY Metro Area	

1: Includes data not distributed by county.

Population estimates for counties will be available in April, 2012 and for cities in June, 2012.

(a) Includes persons reporting only one race.

(b) Hispanics may be of any race, so also are included in applicable race categories.

D: Suppressed to avoid disclosure of confidential information

F: Fewer than 100 firms

FN: Footnote on this item for this area in place of data

NA: Not available

S: Suppressed; does not meet publication standards

X: Not applicable

Z: Value greater than zero but less than half unit of measure shown

Source U.S. Census Bureau: State and County QuickFacts. Data derived from Population Estimates, American Community Survey, Census of Population and Housing, State and County Housing Unit Estimates, County Business Patterns, Nonemployer Statistics, Economic Census, Survey of Business Owners, Building Permits, Consolidated Federal Funds Report
Last Revised: Tuesday, 31-Jan-2012 16:57:35 EST

State & County QuickFacts

Oak Grove (city), Kentucky

People QuickFacts	Oak Grove	Kentucky
Population, 2011 estimate	NA	4,369,356
Population, 2010	7,489	4,339,367
Population, percent change, 2000 to 2010	6.0%	7.4%
Population, 2000	7,064	4,041,769
Persons under 5 years, percent, 2010	15.7%	6.5%
Persons under 18 years, percent, 2010	32.8%	23.6%
Persons 65 years and over, percent, 2010	1.4%	13.3%
Female persons, percent, 2010	49.7%	50.8%
White persons, percent, 2010 (a)	63.5%	87.8%
Black persons, percent, 2010 (a)	22.2%	7.8%
American Indian and Alaska Native persons, percent, 2010 (a)	1.2%	0.2%
Asian persons, percent, 2010 (a)	1.6%	1.1%
Native Hawaiian and Other Pacific Islander, percent, 2010 (a)	0.7%	0.1%
Persons reporting two or more races, percent, 2010	6.4%	1.7%
Persons of Hispanic or Latino origin, percent, 2010 (b)	13.2%	3.1%
White persons not Hispanic, percent, 2010	57.3%	86.3%
Living in same house 1 year & over, 2006-2010	57.0%	84.0%
Foreign born persons, percent, 2006-2010	3.8%	3.1%
Language other than English spoken at home, pct age 5+, 2006-2010	10.5%	4.6%
High school graduates, percent of persons age 25+, 2006-2010	89.7%	81.0%
Bachelor's degree or higher, pct of persons age 25+, 2006-2010	9.7%	20.3%
Mean travel time to work (minutes), workers age 16+, 2006-2010	24.8	22.5
Housing units, 2010	3,343	1,927,164
Homeownership rate, 2006-2010	49.0%	69.9%
Housing units in multi-unit structures, percent, 2006-2010	19.6%	17.7%
Median value of owner-occupied housing units, 2006-2010	\$90,300	\$116,800
Households, 2006-2010	2,854	1,676,708
Persons per household, 2006-2010	2.55	2.48
Per capita money income in past 12 months (2010 dollars) 2006-2010	\$15,959	\$22,515
Median household income 2006-2010	\$34,100	\$41,576
Persons below poverty level, percent, 2006-2010	18.3%	17.7%
	Oak Grove	Kentucky
Business QuickFacts		
Total number of firms, 2007	236	337,600
Black-owned firms, percent, 2007	S	3.1%

American Indian- and Alaska Native-owned firms, percent, 2007	F	0.3%
Asian-owned firms, percent, 2007	F	1.6%
Native Hawaiian and Other Pacific Islander-owned firms, percent, 2007	F	0.0%
Hispanic-owned firms, percent, 2007	F	1.1%
Women-owned firms, percent, 2007	32.2%	25.6%

Manufacturers shipments, 2007 (\$1000)	NA	119,105,421
Merchant wholesaler sales, 2007 (\$1000)	D	74,680,759
Retail sales, 2007 (\$1000)	288,142	50,405,925
Retail sales per capita, 2007	\$30,491	\$11,843
Accommodation and food services sales, 2007 (\$1000)	17,782	6,300,866

	Oak	
Geography QuickFacts	Grove	Kentucky
Land area in square miles, 2010	10.75	39,486.34
Persons per square mile, 2010	696.4	109.9
FIPS Code	57090	21
Counties		

Population estimates for counties will be available in April, 2012 and for cities in June, 2012.

- (a) Includes persons reporting only one race.
 (b) Hispanics may be of any race, so also are included in applicable race categories.

D: Suppressed to avoid disclosure of confidential information
 F: Fewer than 100 firms
 FN: Footnote on this item for this area in place of data
 NA: Not available
 S: Suppressed; does not meet publication standards
 X: Not applicable
 Z: Value greater than zero but less than half unit of measure shown

Source U.S. Census Bureau: State and County QuickFacts. Data derived from Population Estimates, American Community Survey, Census of Population and Housing, County Business Patterns, Economic Census, Survey of Business Owners, Building Permits, Consolidated Federal Funds Report, Census of Governments
 Last Revised: Tuesday, 31-Jan-2012 17:14:27 EST

State & County QuickFacts

Christian County, Kentucky

People QuickFacts	Christian	
	County	Kentucky
Population, 2011 estimate	NA	4,369,356
Population, 2010	73,955	4,339,367
Population, percent change, 2000 to 2010	2.3%	7.4%
Population, 2000	72,265	4,041,769
Persons under 5 years, percent, 2010	9.8%	6.5%
Persons under 18 years, percent, 2010	28.5%	23.6%
Persons 65 years and over, percent, 2010	10.3%	13.3%
Female persons, percent, 2010	49.3%	50.8%

White persons, percent, 2010 (a)	71.5%	87.8%
Black persons, percent, 2010 (a)	21.2%	7.8%
American Indian and Alaska Native persons, percent, 2010 (a)	0.6%	0.2%
Asian persons, percent, 2010 (a)	1.0%	1.1%
Native Hawaiian and Other Pacific Islander, percent, 2010 (a)	0.4%	0.1%
Persons reporting two or more races, percent, 2010	3.3%	1.7%
Persons of Hispanic or Latino origin, percent, 2010 (b)	6.1%	3.1%
White persons not Hispanic, percent, 2010	68.6%	86.3%

Living in same house 1 year & over, 2006-2010	76.9%	84.0%
Foreign born persons, percent, 2006-2010	2.9%	3.1%
Language other than English spoken at home, pct age 5+, 2006-2010	7.1%	4.6%
High school graduates, percent of persons age 25+, 2006-2010	84.0%	81.0%
Bachelor's degree or higher, pct of persons age 25+, 2006-2010	13.7%	20.3%
Veterans, 2006-2010	8,159	331,344
Mean travel time to work (minutes), workers age 16+, 2006-2010	18.1	22.5
Housing units, 2010	29,459	1,927,164
Homeownership rate, 2006-2010	56.5%	69.9%
Housing units in multi-unit structures, percent, 2006-2010	21.7%	17.7%
Median value of owner-occupied housing units, 2006-2010	\$95,500	\$116,800
Households, 2006-2010	25,923	1,676,708
Persons per household, 2006-2010	2.59	2.48
Per capita money income in past 12 months (2010 dollars) 2006-2010	\$18,476	\$22,515
Median household income 2006-2010	\$37,061	\$41,576
Persons below poverty level, percent, 2006-2010	20.0%	17.7%

Business QuickFacts	Christian	
	County	Kentucky
Private nonfarm establishments, 2009	1,335	90,661 ¹

Private nonfarm employment, 2009	22,186	1,486,545 ¹
Private nonfarm employment, percent change 2000-2009	-1.8%	-1.8% ¹
Nonemployer establishments, 2009	3,276	265,757

Total number of firms, 2007	4,321	337,600
Black-owned firms, percent, 2007	7.2%	3.1%
American Indian- and Alaska Native-owned firms, percent, 2007	F	0.3%
Asian-owned firms, percent, 2007	3.7%	1.6%
Native Hawaiian and Other Pacific Islander-owned firms, percent, 2007	F	0.0%
Hispanic-owned firms, percent, 2007	2.2%	1.1%
Women-owned firms, percent, 2007	27.4%	25.6%

Manufacturers shipments, 2007 (\$1000)	1,571,636	119,105,421
Merchant wholesaler sales, 2007 (\$1000)	878,401	74,680,759
Retail sales, 2007 (\$1000)	936,093	50,405,925
Retail sales per capita, 2007	\$11,565	\$11,843
Accommodation and food services sales, 2007 (\$1000)	80,082	6,300,866
Building permits, 2010	115	7,986
Federal spending, 2009	4,643,462	56,255,193 ¹

Geography QuickFacts	Christian County	Kentucky
Land area in square miles, 2010	717.50	39,486.34
Persons per square mile, 2010	103.1	109.9
FIPS Code	047	21
Metropolitan or Micropolitan Statistical Area	Clarksville, TN-KY Metro Area	

1: Includes data not distributed by county.

Population estimates for counties will be available in April, 2012 and for cities in June, 2012.

(a) Includes persons reporting only one race.

(b) Hispanics may be of any race, so also are included in applicable race categories.

D: Suppressed to avoid disclosure of confidential information

F: Fewer than 100 firms

FN: Footnote on this item for this area in place of data

NA: Not available

S: Suppressed; does not meet publication standards


X: Not applicable

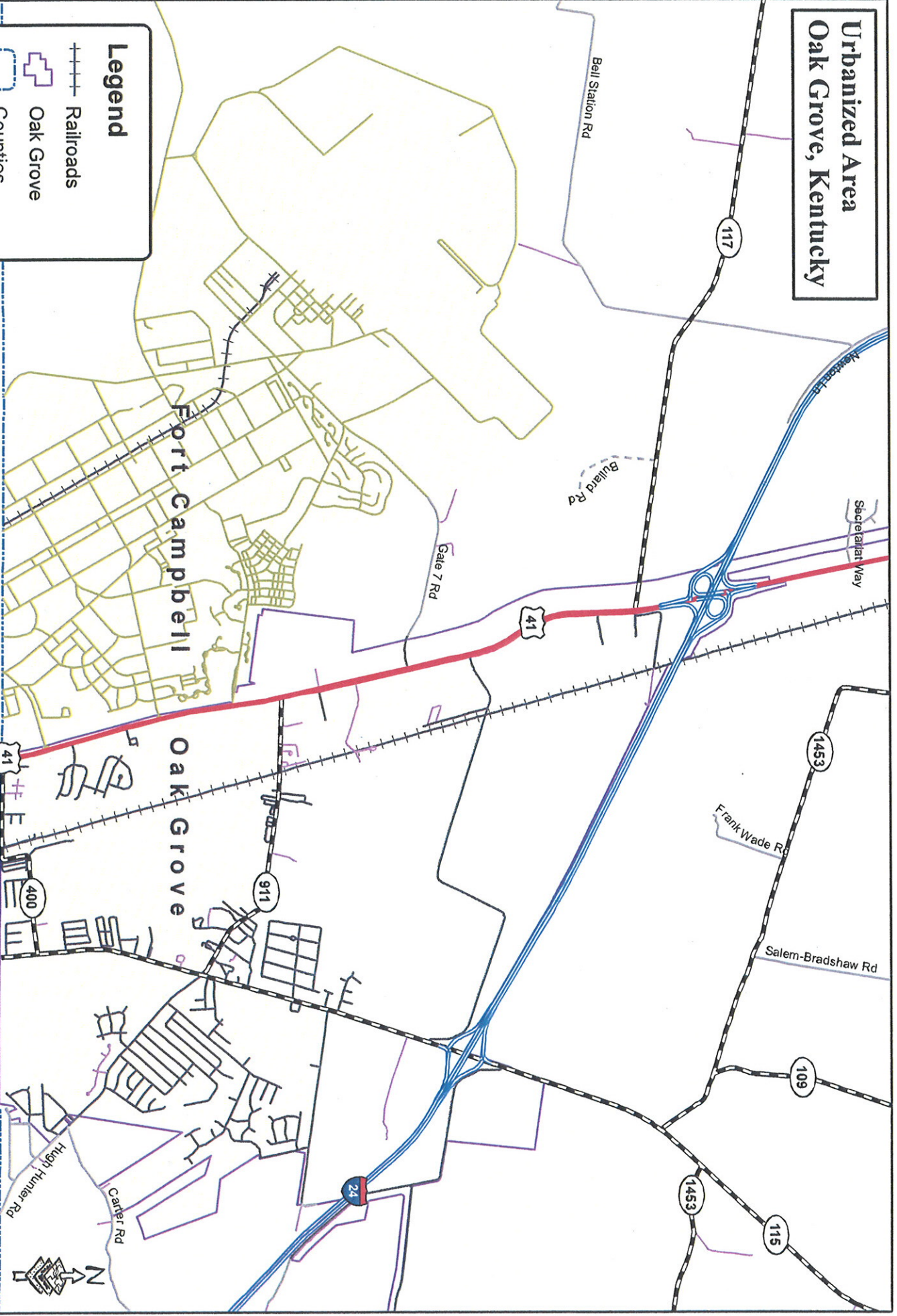
Z: Value greater than zero but less than half unit of measure shown

Source U.S. Census Bureau: State and County QuickFacts. Data derived from Population Estimates, American Community Survey, Census of Population and Housing, State and County Housing Unit Estimates, County Business Patterns, Nonemployer Statistics, Economic Census, Survey of Business Owners, Building Permits, Consolidated Federal Funds Report
 Last Revised: Tuesday, 31-Jan-2012 16:51:25 EST

**Urbanized Area
Oak Grove, Kentucky**

Legend

-  Railroads
-  Oak Grove
-  Counties
-  Urbanized Area



Prepared by: Pat Lee, GIS Manager
 Pennyriple Area Development District
 Date: May 2012
 File: MPO - Urbanized Area-Oak Grove.mxd